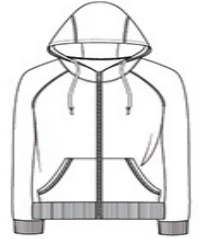




This hoodie features coverstitching and a three-piece anorak-style hood that is great for weekends and weekdays.

- 5.9-ounce, 50/50 cotton/poly
- Hoodie with dyed-to-match drawcords
- Split kangaroo pocket
- Ribbed sleeve cuffs and hem



front



back

HOW TO MEASURE



CHEST
With arms down at sides, measure around the upper body, under arms and over the fullest part of the chest.

SIZE CHART

	S	M	L	XL	2XL
Chest	36-38	39-41	42-44	45-47	48-50

COLOR INFORMATION



Black
PMS NTR BLACK
C



Light Grey